

DATA SHEET

SKIN | OBLIQUE COLLECTION

SKIN

Skin was developed to give every space a new dimension that harmoniously combines comfort and aesthetics. A furnishing accessory that acts as a sound-absorbing element to promote human well-being within all living spaces. Skin ensures proper reverberation absorption in enclosed spaces and, thanks to its original aesthetic design, enhances any environment by integrating with it.

SUSTAINABLE MATERIALS

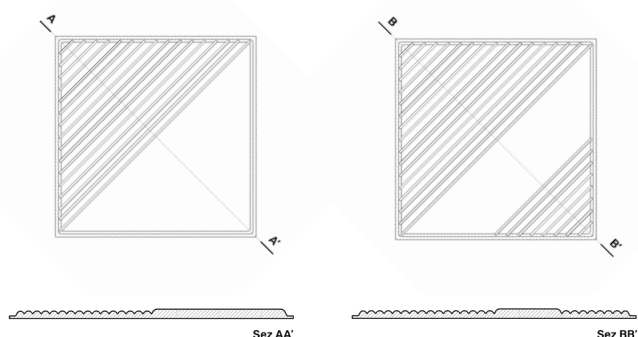
The Research & Development people behind Skin considered it a must to offer a solution that would ensure the use of sustainable materials.

Skin solutions are made of FIBTEC®, a special polyester fiber that is completely non-toxic and hypoallergenic, made from recycled PET. This material has a high sound absorption coefficient, is environmentally friendly and long-lasting.

The FIBTEC® inner structure is then covered with Trevira® fabrics, materials with a natural texture that are soft to the touch, yet tough, easy to wash and highly durable. Trevira fabrics are certified, with the best results, in accordance with Oeko-Tex Standard 100.

THICKNESS

About 22 mm.



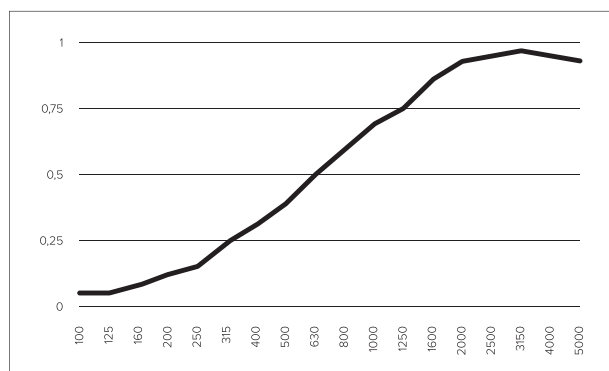
FLAME RESISTANCE

Euroclass B-s2,d0

SOUND ABSORPTION

Sound absorption coefficient in reverberation chamber (UNI EN ISO 354:2003).

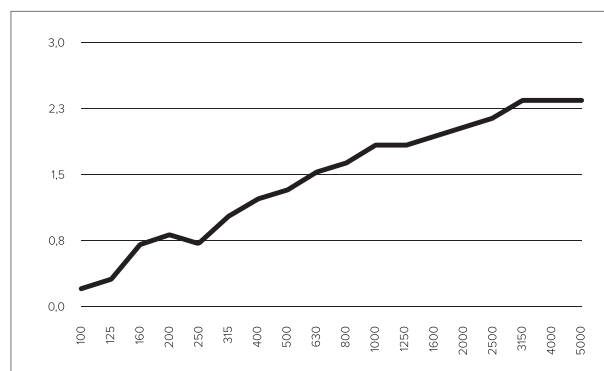
Frequency (Hz)	125	250	500	1000	2000	4000
α_p	0,05	0,15	0,4	0,7	0,9	0,95



Test done on panels adhering to the substrate (type A assembly).

Sound absorption coefficient in reverberation chamber (UNI EN ISO 354:2003).

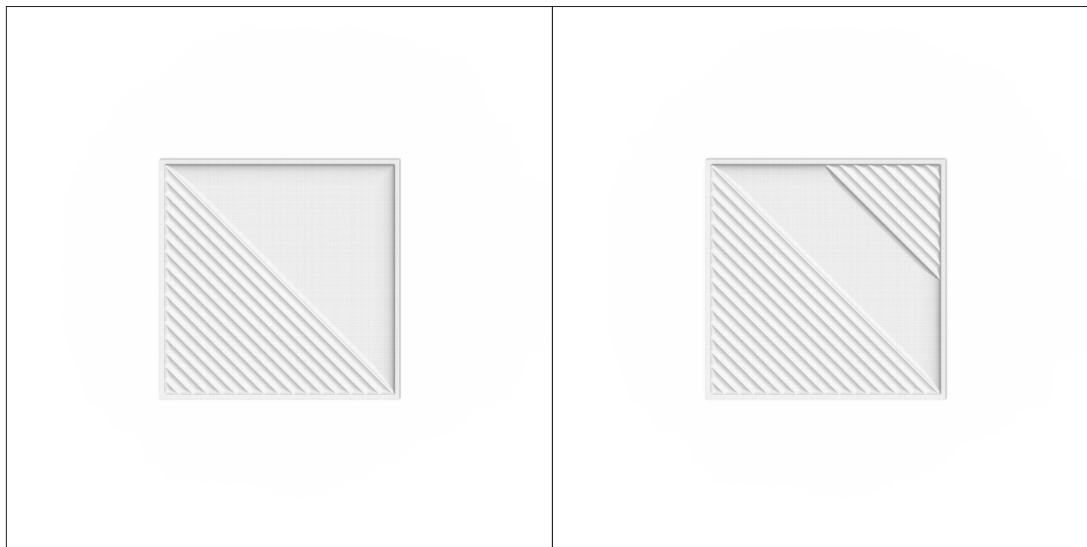
Frequency (Hz)	125	250	500	1000	2000	4000
$A_{obj} (m^2)$	0,40	0,85	1,35	0,75	2,00	2,30
α_{obj}	0,15	0,3	0,45	0,6	0,65	0,75



Test done on non-adhering panels (type J assembly). These figures refer to measurement on the single 120x120 cm-sized unit (2.88 m² exposed area).

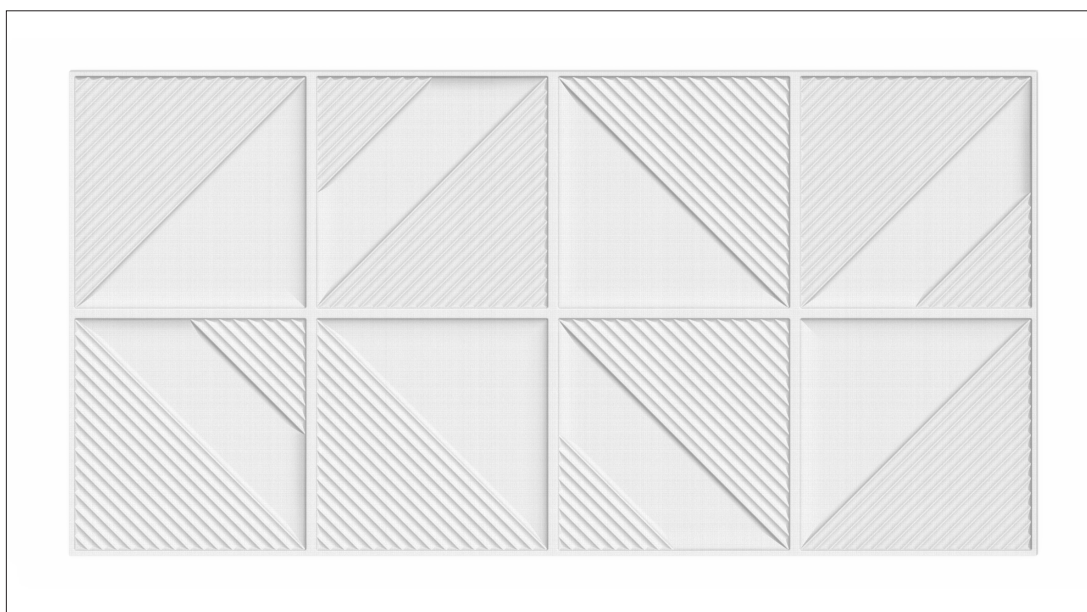
OBLIQUE COLLECTION: SKIN WALL

Skin Wall solutions are specifically designed for wall-adhering installation. They are available as a single module, in the two W1A and W1B versions, which allow you to create compositions of various sizes with a variety of geometric patterns, and in the WMAXI module, designed to optimize installation time on large surfaces. Refer to the specific installation instructions for application methods.



W1A (60 x 60 cm)

W1B (60 x 60 cm)



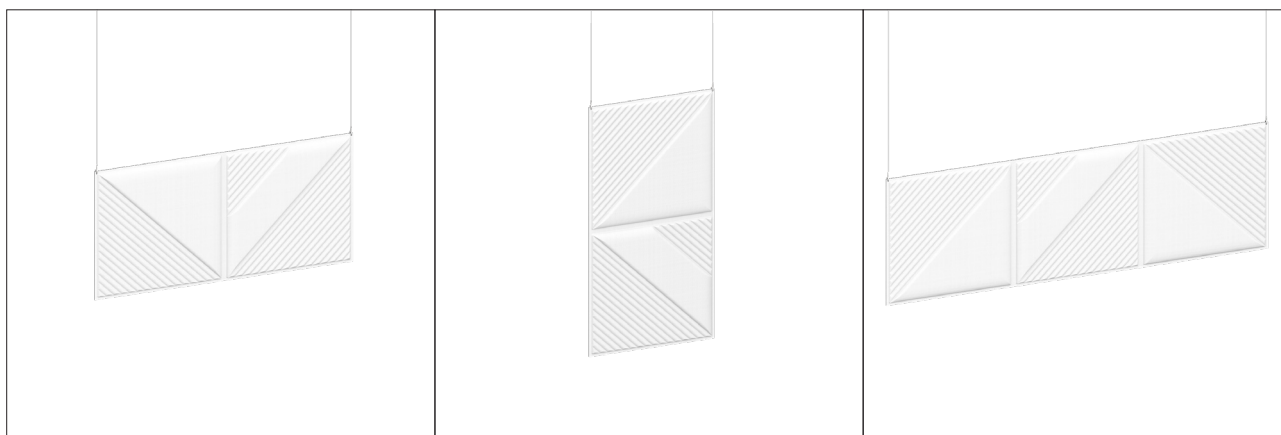
WMAXI (240 x 120 cm)

SPECIFICATION ITEMS: SKIN WALL

Three-dimensional modular sound-absorbing tile consisting of FIBTEC®, a polyester technical textile fiber with high sound-absorbing properties, covered with Trevira® CS polyester fiber fabric. Thickness around 22 mm. Featuring Oblique pattern surface processing. Can be visibly applied in rooms as a surface covering, using special tape and adhesive or screws. Size... (60x60 cm, 60x120 cm, 60x180 cm, 60x240 cm, 120x120 cm, 120x180 cm, 120x240 cm). Finish color chosen by DL. Euroclass B-s2, d0 certification. Sound absorption coefficient tested in reverberation chamber on panels adhering to the substrate (type A assembly) according to UNI EN ISO 354.

OBLIQUE COLLECTION: SKIN BAFFLE

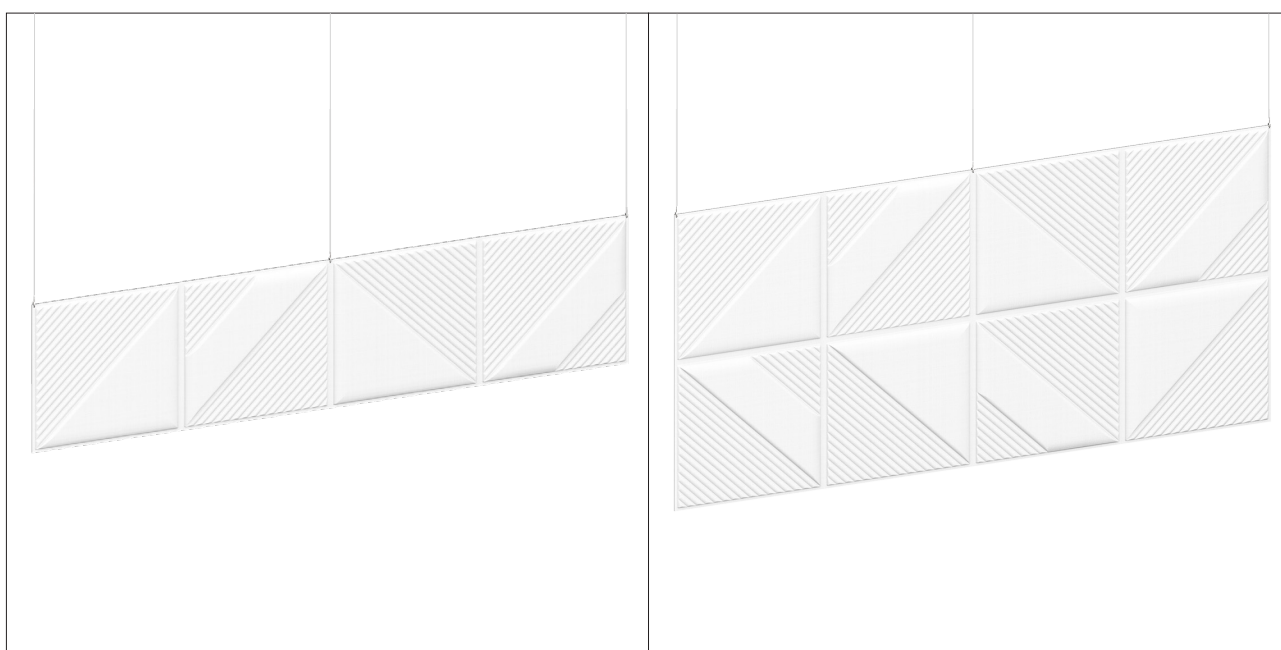
Skin Baffle solutions are specifically designed for suspended installation in baffle mode (perpendicular to the ceiling). Available in a variety of sizes with a vertical or horizontal orientation, they can also be requested in a double-sided version for an enhanced aesthetic effect. Refer to the specific installation instructions for application methods.



B20 (120 x 60 cm)

B2V (60 x 120 cm)

B3 (180 x 60 cm)



B4 (240 x 60 cm)

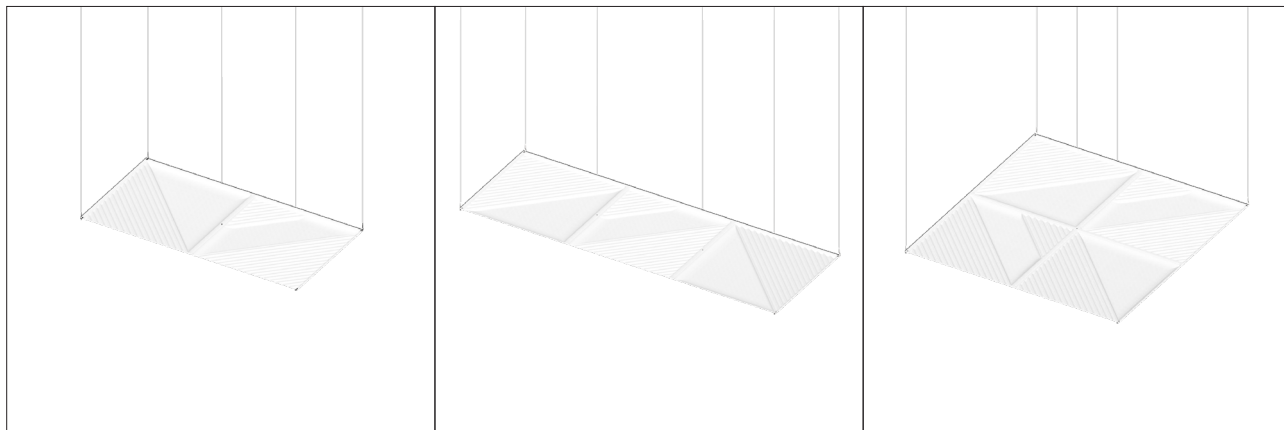
BMAXI (240 x 120 cm)

SPECIFICATION ITEMS: SKIN BAFFLE

Three-dimensional modular sound-absorbing tile consisting of FIBTEC®, a polyester technical textile fiber with high sound-absorbing properties, covered with Trevira® CS polyester fiber fabric. Thickness around 22 mm. Featuring Oblique pattern surface processing. Available in single-sided and double-sided, single-color and two-color versions. Can be visibly applied in rooms suspended from the ceiling using a special baffle hanging kit. Size... (60x60 cm, 60x120 cm, 60x180 cm, 60x240 cm, 120x120 cm, 120x180 cm, 120x240 cm). Finish color chosen by DL. Euroclass B-s2, d0 certification. Sound absorption coefficient tested in reverberation chamber on non-adhering panels (type J assembly) according to UNI EN ISO 354.

OBLIQUE COLLECTION: SKIN CEILING

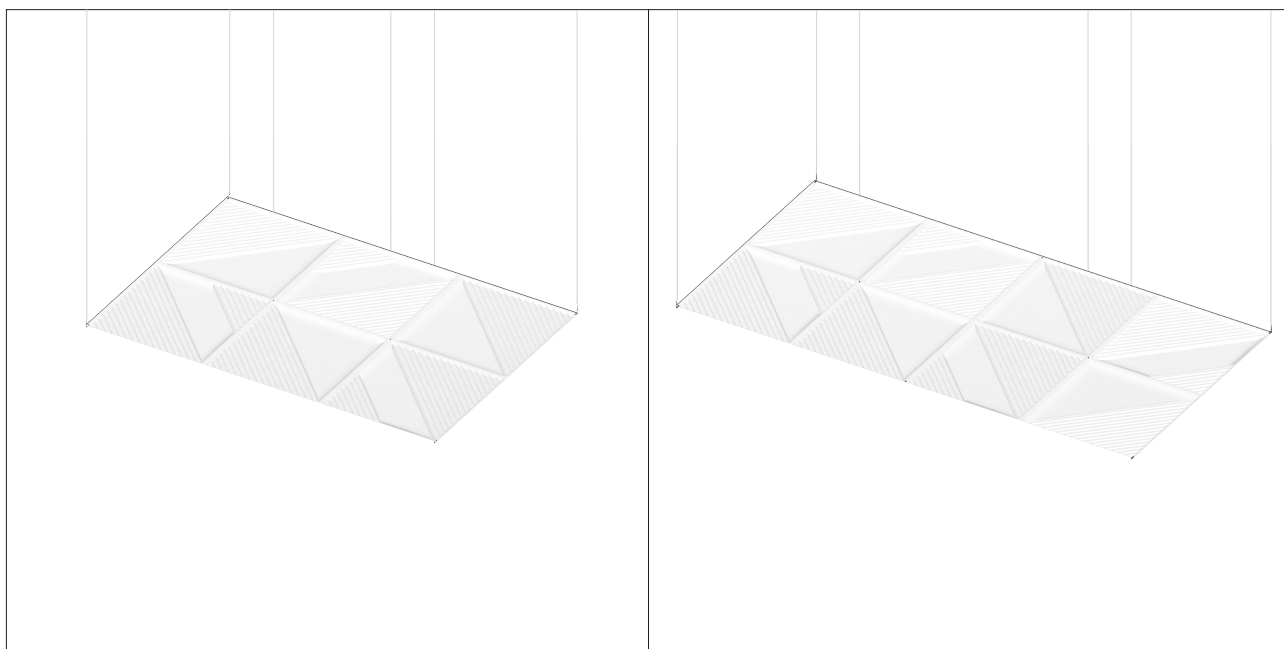
Skin Ceiling solutions are specifically designed for suspended installation in island mode. Available in different sizes, they can be installed at different heights, parallel or at an angle to the installation surface. The geometric decoration remains visible for a consistently original choreographic effect. Refer to the specific installation instructions for application methods.



C2 (120 x 60 cm)

C3 (180 x 60 cm)

C4 (120 x 120 cm)



C6 (180 x 120 cm)

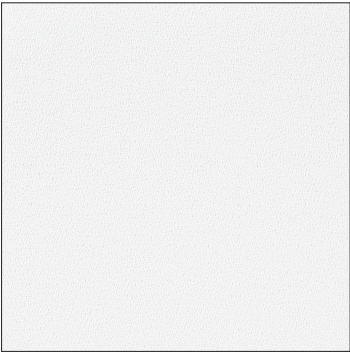
CMAXI (240 x 120 cm)

SPECIFICATION ITEMS: SKIN CEILING

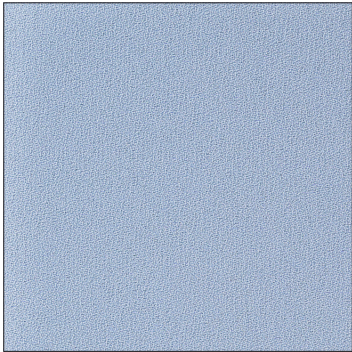
Three-dimensional modular sound-absorbing tile consisting of FIBTEC®, a polyester technical textile fiber with high sound-absorbing properties, covered with Trevira® CS polyester fiber fabric. Thickness around 22 mm. Featuring Oblique pattern surface processing. Can be visibly applied in rooms suspended from the ceiling using a special island hanging kit. Size... (60x60 cm, 60x120 cm, 60x180 cm, 60x240 cm, 120x120 cm, 120x180 cm, 120x240 cm). Finish color chosen by DL. Euroclass B-s2, d0 certification. Sound absorption coefficient tested in reverberation chamber on non-adhering panels (type J assembly) according to UNI EN ISO 354.

COLOR PALETTE

Skin's color palette takes inspiration from the natural world to create sophisticated environments that deliver authentic and complete well-being. The palette shades are available for all versions of Skin. Custom colors can be requested for specific design requirements and quantities.



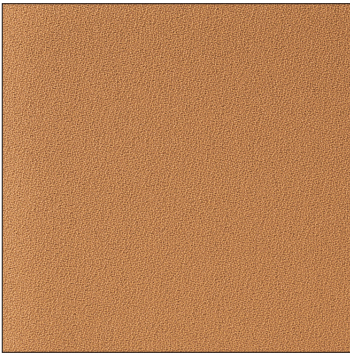
ALPACA



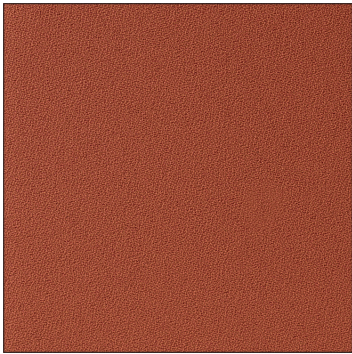
DOLPHIN



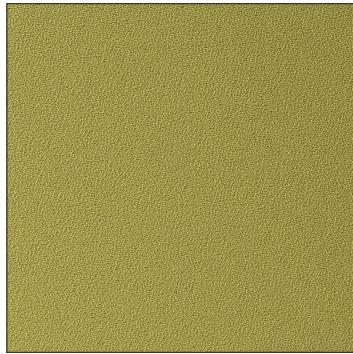
CARIBOU



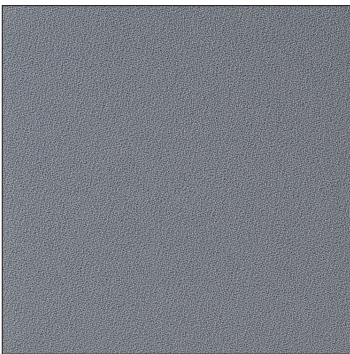
GIRAFFE



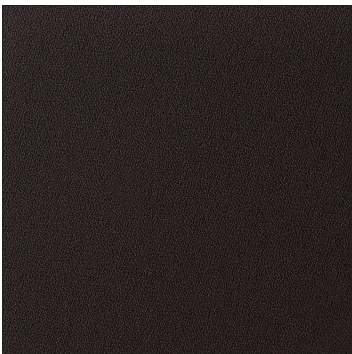
FOX



IGUANA



WHALE



PANTHER



CUSTOM

CAUTIONS

This data sheet does not constitute a specification and, since it consists of several pages, you must be sure to consult the complete document. The directions provided are based on our current best experience but are nonetheless for general information only. The user will be responsible for determining whether the product is suitable for its intended use and for assuming all responsibility associated with its use.

Skin is a brand of Tecnasfalti

via dell'Industria, 12

Loc. Francolino

20074 Carpiano (MI)

T. +39 02 9885701

E. hello@skinforspaces.it

skinforspaces.it